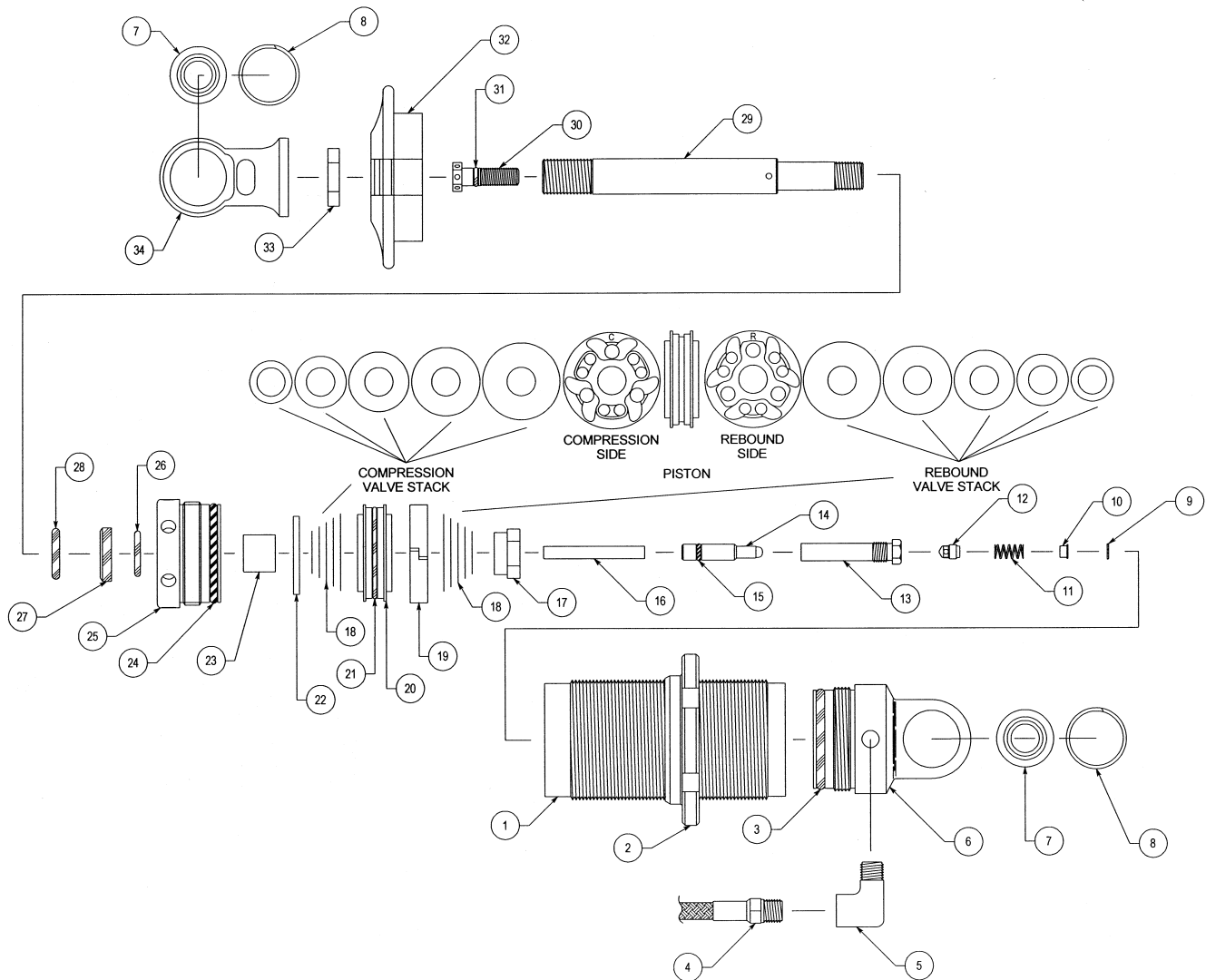


# 8100 Series Parts List

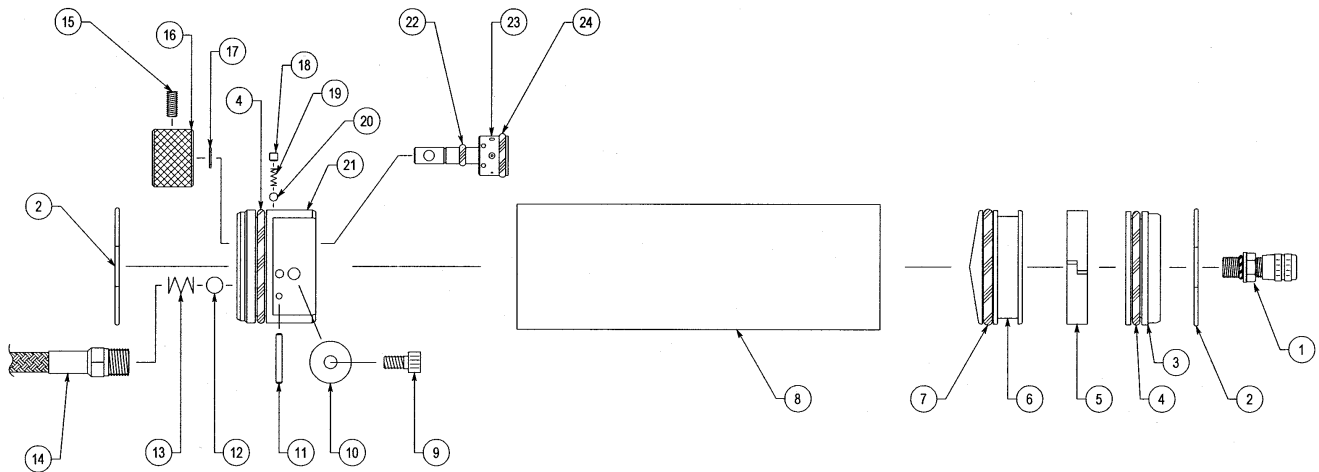


ITEM NO.	PART NO.	DESCRIPTION
<b>Aluminum Coil-over Double Adjustable</b>		
1	BD-81__*	Body, Aluminum Coil-over (10.0" - 24.0")
2	RH-812__*	Ride Height Adjuster, 8100, (2.25" or 2.50")
3	OR-2221-B	O-Ring, 2-221, Buna 70
4	HO-87__*	Hose (4" - 36" in 1" increments)
5	FT-__*	Fitting, (45° or 90°), 1/8" NPT
6	BC-81__*	Body Cap, 8100, (0°, 45°, 90°, 135°)
7	MO-8T	Mono Ball, .500 ID, Teflon
	MO-15T	Monoball, 15mm ID, Teflon
8	RR-16	Retaining Ring, 1.025 Spiroloc
	<b>JT-76RD</b>	<b>Jet, Rebound Complete (Includes Items 9-13)</b>
9	RR-05	Retaining Ring, .250 Internal
10	JT-76HAT	Jet, Top Hat
11	SP-15	Spring, (FF71)
12	JT-76POP	Jet, Poppet
13	JT-RDHSNG	Jet, Rebound, Straight Thru
14	NE-76	Needle
15	OR-2007-B	O-Ring, 2-007, Buna 70
16	MR-8100	Metering Rod
17	NT-02R	Ring Nut, .500 x 20

ITEM NO.	PART NO.	DESCRIPTION
18	VS-__*	Valve Stack
19	PB-55	Piston Band, 55mm
20	PI-__*	Piston
21	OR-2028-B	O-Ring, 2-028, Buna 70
22	VW-99	Top Out Plate, 1.375 x .500
	<b>AS-76SB</b>	<b>Assembly, Shaft Bearing Complete (Includes Items 23-27)</b>
23	BU-10DU10	Bushing, DU .625 x .625
24	OR-2221-B	O-Ring, 2-221, Buna 70
25	SB-765	Shaft Bearing, 55mm
26	OR-2114-V	O-Ring, 2-114, Viton 75
27	SL-09	Shaft Wiper, .625 Poly (Blue)
28	OR-2312-B	O-Ring, 2-312, Buna 70
29	SH-__*	Shaft, Adjustable, (10.0" - 24.0")
30	RS-81	Rebound Screw, Adjustable Shaft
31	OR-2008-B	O-Ring, 2-008, Buna 70
32	SR-812__*	Spring Retainer, 8100, (2.25" or 2.50")
33	NT-04J	Jam Nut, .625 x 18
34	EY-81160	Eyelet, 1.60 Sweep, 0°
	EY-811690	Eyelet, 1.60 Sweep, 90°
	EY-81200	Eyelet, 2.00 Sweep, 0°
	EY-81230	Eyelet, 2.30 Sweep, 0°

See Pages 6 and 7 for 8100 Series Adjuster.  
\* Incomplete Part Number

# 8100 Series Compression Adjuster Parts List



ITEM NO.	PART NO.	DESCRIPTION
		<b>8100 Series CD Adjuster Option</b> Available in 5.5" and 7" Body Lengths
1	IU-22-S	Air Valve, Port O-Ring, Steel
	IU-04	Valve Core, 2000 psi
	IU-06	Valve Cap, High Temperature
	OR-2010	O-Ring, 2-010, Buna 70
2	RR-06	Wire Ring, .0625 Wire Diameter x 1.900
3	CP-81R	Cap, 8100 Reservoir
4	OR-2221-B	O-Ring, 2-221, Buna 70
5	PB-55	Piston Band, 55mm
6	PI-81R	Piston, Reservoir 1.72 Diameter
7	OR-2323-M	O-Ring, 2-323, Moly 70
8	RB-81__*	Reservoir Body, 8100, (5.50" or 7.00")
9	SC-24	Screw, SHCS, 10-24 x 3/8"
10	VW-03	Washer, Valve, .635 x .015 x .191
11	DO-04	Dowel Pin, 3/32" x 3/4"

ITEM NO.	PART NO.	DESCRIPTION
12	BA-250-ST	Ball, Steel - 1/4"
13	SP-10	Spring, (TA2086)
14	HO-87__*	Hose (4" - 36" in 1" increments)
	<b>AS-81UD</b>	<b>Assembly, Update 8100 CD Adj with Knob</b> <b>(Includes Items 4, 9-13, 15-24)</b>
15	SC-02	Screw, Socket Set, 8/32" x 3/8"
16	KN-81	Knob, CD 8100
17	RR-02	Retaining Ring, .250 External
18	SC-08	Screw, Socket Set, 8-32" x 1/8"
19	SP-14	Spring, (A109)
20	BA-125-ST	Ball, Steel - 1/8"
21	HG-81D	Housing, CD 8100 Dished
22	OR-2006-B	O-Ring, 2-006, Buna 70
23	DR-81	Drum, CD 8100
24	OR-2013-B	O-Ring, 2-013, Buna 70

\* Incomplete Part Number